

DeckTok

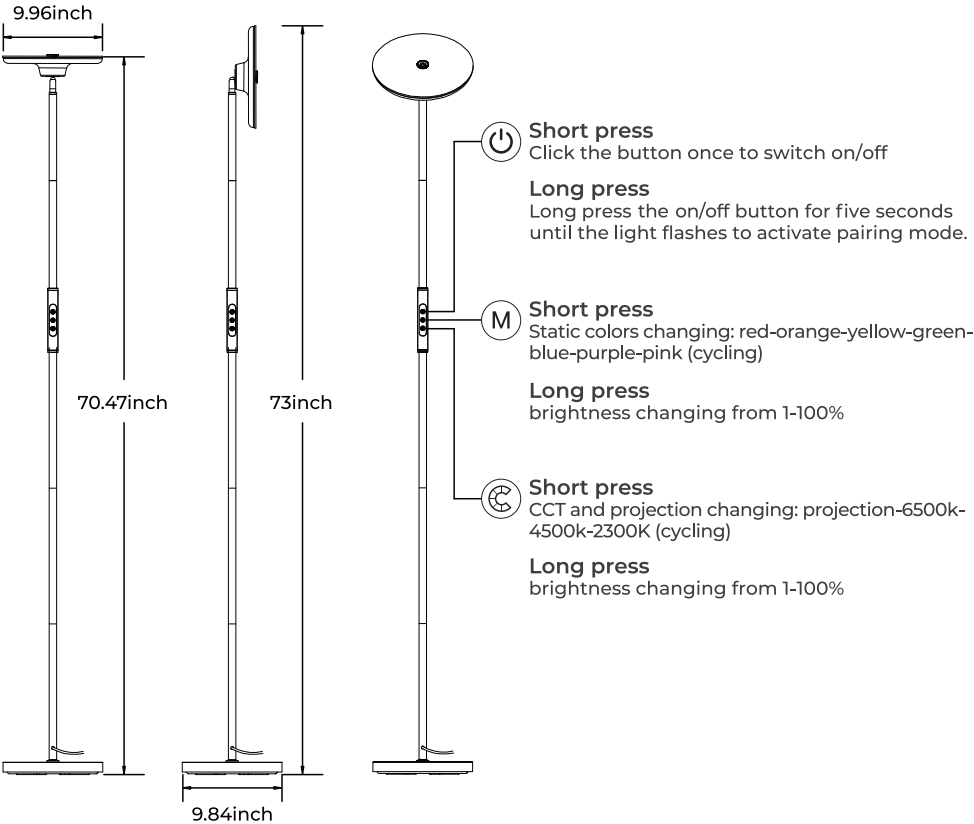
USER MANUAL

Smart Projection Floor Lamp

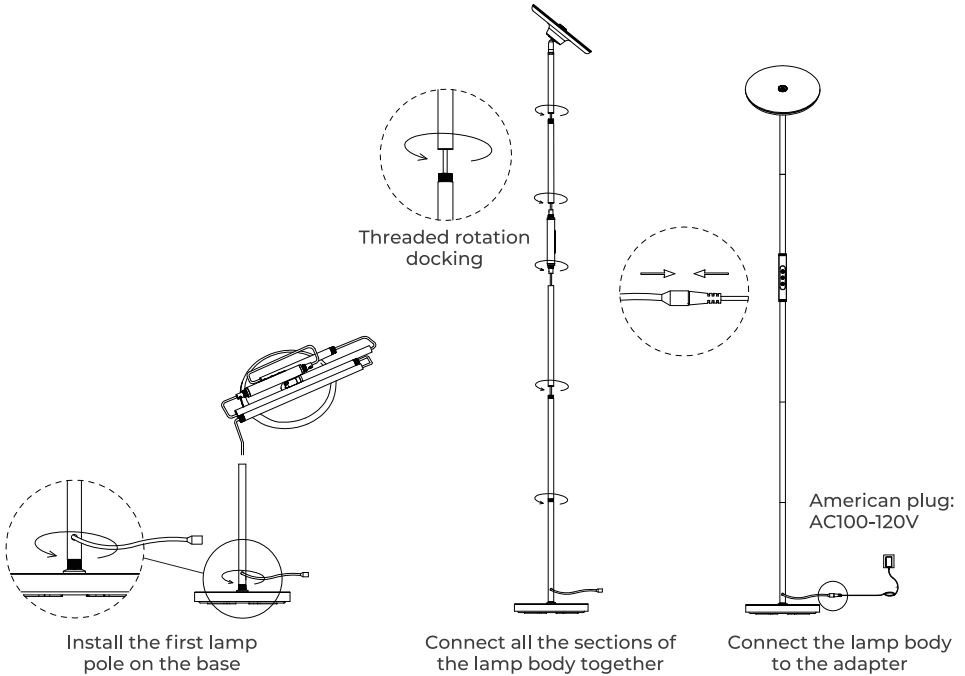
What You Get

ITEM	QUANTITY
Lamp Body	1
Base	1
Power Adapter	1
User Manual	1
White Projection Film	1
Black Projection Film	4

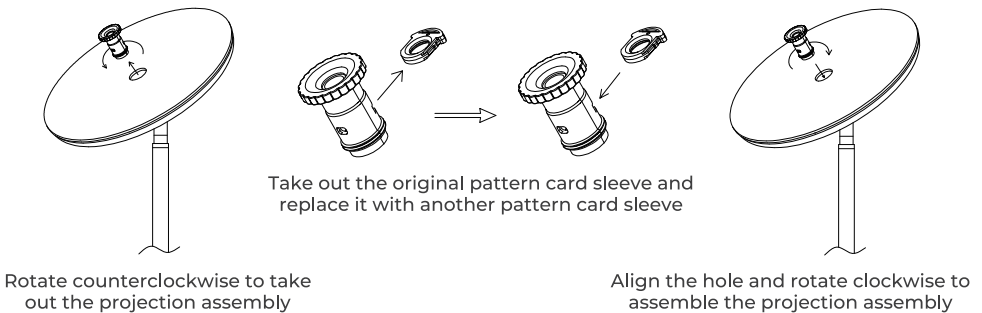
At a Glance



Installation



Replacing Films



Projection Filter Notice

- ① White projection filter with high quality glass film and electroplating pictures, long life time, lighting more than 10000 hours, for night light or daily decoration.
- ② Black projection filter with PET film, colorful design, and up to two hours' lighting each time, it can use 15-20 times, for party decoration.

Setting Up The System

- 1. Download the Decktok App from App Store for iPhones / Google Play for Android smartphones.



- 2. Connect to a WiFi supporting 2.4GHz and enable your smartphone’s Bluetooth.
- 3. Press the on/off button for 5 seconds. When the light flashes, you can open the App.
- 4. On App home page, tap “Add Device” or tap “+” icon at the upper right corner and allow it to search for the light device.
- 5. Wait for the device icon to appear. Tap the device icon and follow the on-screen instructions to complete pairing.

Specifications

Adapter Input	AC 100-240V
Power Input	24V / 1A
Lumen	1600lm
Lighting Color	RGBWW
Color Temperature	2300K-6500K
Control Method	APP, Voice Control, BUTTOM CONTROL
Working Temperature	14°F-113°F

Notice

- The product is only suitable for indoor use, avoid long time work in humid environment.
- Do not soak the product in water or other liquids.
- When installing, the screws need to be locked firmly and not loose.
- Do not install the product in a high temperature environment.
- The adapter needs to be connected in place, and there must be no looseness or poor contact.
- Do not disassemble and install the lamp and battery without permission.
- Use the product with the provided power adapter only.
- Do not allow children to install the lamp alone.
- CAUTION-The product is not a toy. Children and the disabled should use it under adult supervision.

Troubleshooting

1.Unable to connect to the App

- Ensure the light strip is powered on.
- Check if Bluetooth is enabled on your phone.
- Make sure your phone is connected to a 2.4GHz Wi-Fi network.
- Long press the on/off button for five seconds until the light flashes to activate pairing mode.

2. The light does not glow

- Unplug the power adapter, disconnect and reconnect all components, then plug the power adapter back in.
- If the issue persists, please contact DeckTok's official customer service.



Customer Service

Warranty: 12-month Limited Warranty

 www.decktok.com

 info@decktok.com