

***DeckTok***

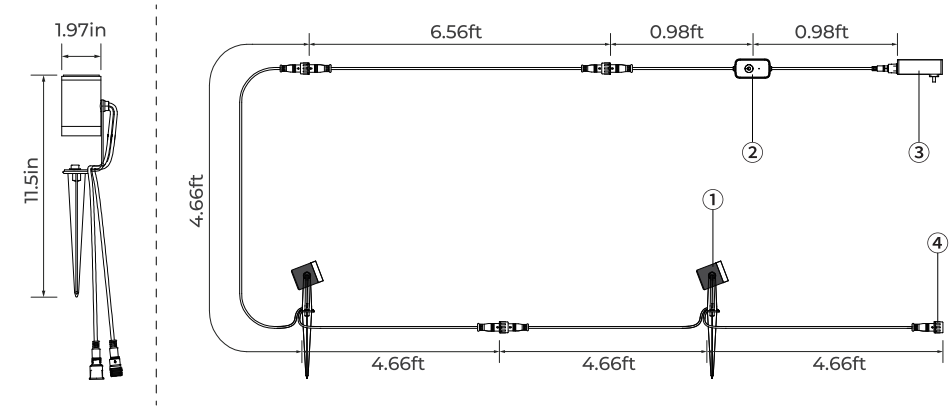
**USER MANUAL**

Smart Landscape Spotlights

# What You Get

ITEM	QUANTITY
Power Adapter	1
Control Box	1
Lamp Body	2
Ground Stake	2
M5×10mm Screw	2
Hex Key	1
M5×25mm Screw	2
Anchor	2
Waterproof End Cap	1
User Manual	1

# At a Glance



- ① Spotlights
- ② Control Box
  - Press once to switch modes.
  - Press twice to power on/off.
  - Long press for 5 seconds light flashing in connection nextwork mode.
- ③ Power Adapter
- ④ Waterproof End Cap

# Installing Your Device

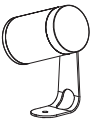
## Method One: Inserting into the Ground

- ① Connect each pair of Lamp Body and Ground Stake using M5×10mm screws and the Hex Key. Secure the Waterproof Connector Caps for each connection.

**\*Note:** Please ensure that the spotlights are connected securely and install the waterproof end cap on the last spotlight.

- ② Connect the Spotlights to the Control Box and the Adapter.
- ③ Before inserting them into the ground, plug in a power adapter to ensure all lights illuminate properly.
- ④ Position the ground stake firmly into the ground at your desired locations.

### You'll need



Lamp Body x2



M5×10mm Screw x2



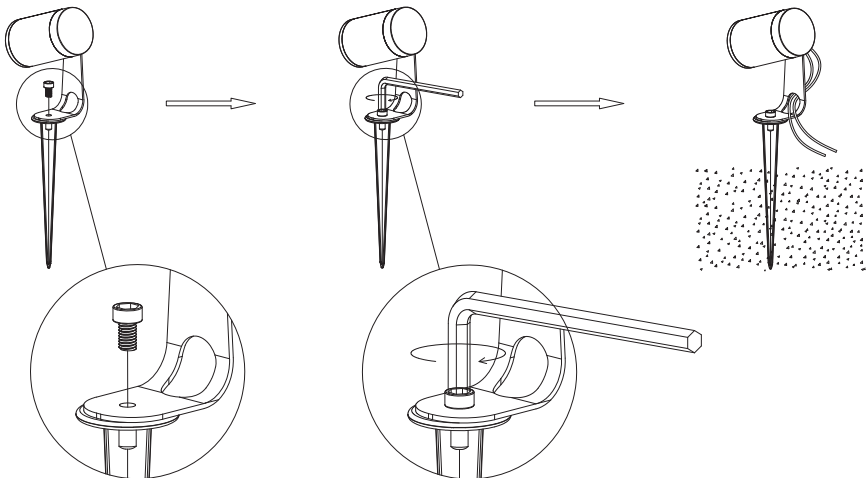
Ground Stake x2



Hex Key x1



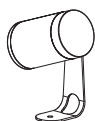
Waterproof End Cap x1



## Method Two: Mounting on Walls

- ① Drill a 7mm hole on the wall at your desired position. The distance between two holes should be at least 2 inches.
- ② Insert the Anchor into the hole.
- ③ Mount the Lamp Body onto the wall using M5×25mm Screws. Tighten the screws securely to fix the connection.

### You'll need



Lamp Body x2



M5×25mm Screw x2



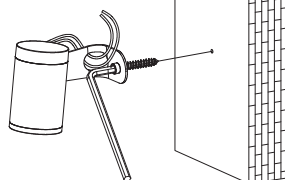
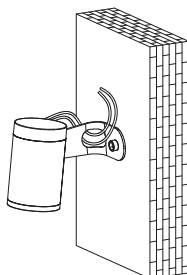
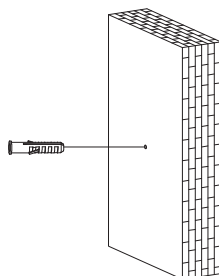
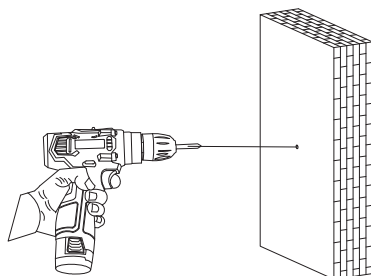
Anchor x2



Hex Key x1



Waterproof End Cap x1



# Setting Up The System

- 1. Download the Decktok App from App Store for iPhones / Google Play for Android smartphones.



- 2. Connect to a WiFi supporting 2.4GHz and enable your smartphone’s Bluetooth.
- 3. Press the on/off button on the control box for 5 seconds. When the light flashes, you can open the App.
- 4. On App home page, tap “Add Device” or tap “+” icon at the upper right corner and allow it to search for the spotlight device.
- 5. Wait for the device icon to appear. Tap the device icon and follow the on-screen instructions to complete pairing.

## Specifications

Adapter Input	AC 100-240V
Power Input	27V / 0.88A
Length	27.17FT (8.28M)
Light Color	RGBWW
Waterproof	Light: IP65 Control Box: IP65 Power Adapter: IP44
Wireless Protocol	2.4GHz Wi-Fi + Bluetooth
Working Temperature	-4°F-104°F

## Notice

- The product is for outdoor use only.
- Tighten up all the waterproof connector caps before use.
- Do not submerge the product in water or other liquids.
- Do not expose it to splashing or dripping water.
- Do not install the product near heat sources or in damp locations.
- Use the product with the provided power adapter only. Using unauthorized adapters may be dangerous.
- Be careful with the sharp ground stakes of the product.
- The recommended temperature range for devices and accessories is -20°C to 40°C (-4°F to 104°F) .
- Do not allow children to install this product.
- This product is not a toy. Children and the disabled should use it under adult supervision.

## Troubleshooting

### 1.Unable to connect to the App

- Ensure the device is powered on.
- Check if Bluetooth is enabled on your phone.
- Make sure your phone is connected to a 2.4GHz Wi-Fi network.
- If not, set the router to 2.4GHz and then reset it.

Long-press the control box button for five seconds until the light flashing in connection nextwork mode.

### 2. Some lights do not glow

- Unplug the adapter and plug it back in.
- If the issue persists, please contact DeckTok's official customer service.

## Customer Service

Warranty: 12-month Limited Warranty

 [www.decktok.com](http://www.decktok.com)

 [info@decktok.com](mailto:info@decktok.com)

